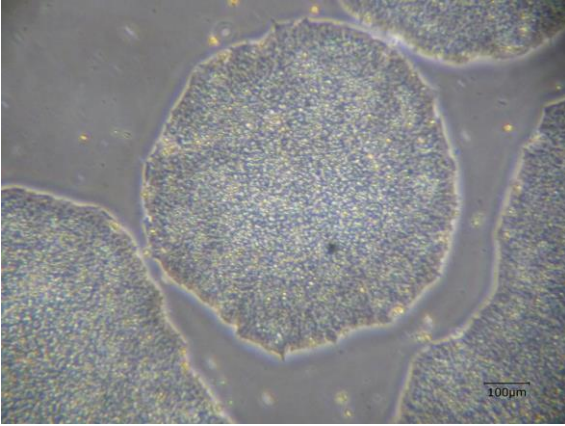
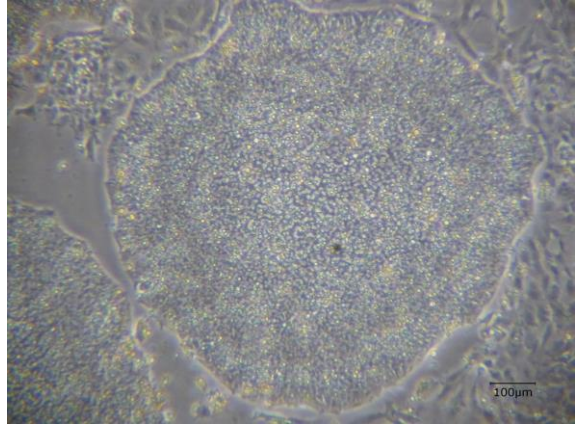


【 CiRA-j-1203 】 Morphology of iPSC colonies

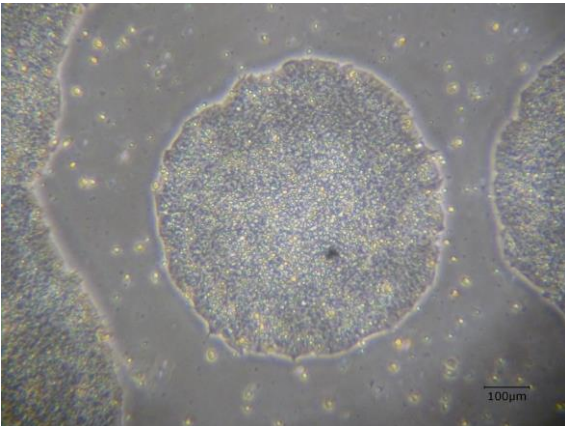
CiRA-j-1203-A: passage-3



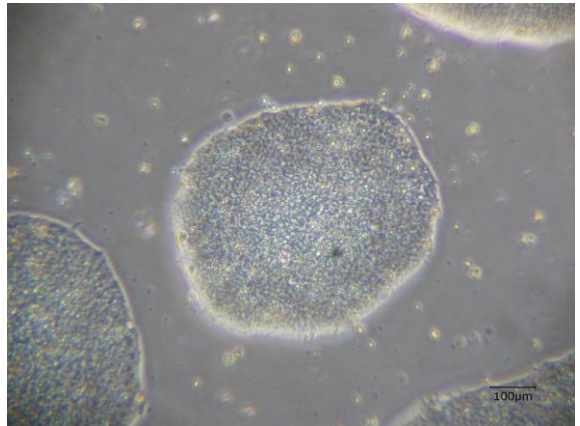
CiRA-j-1203-B: passage-3



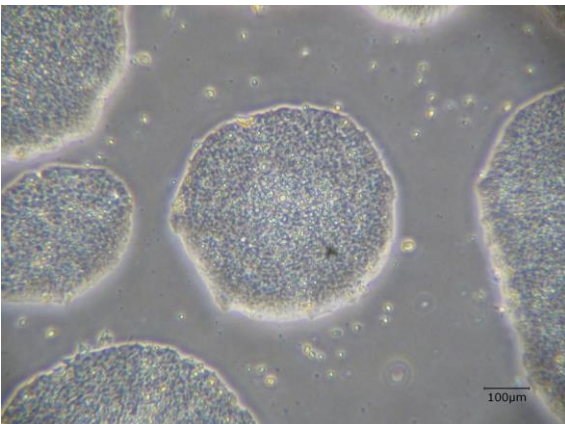
CiRA-j-1203-C: passage-3



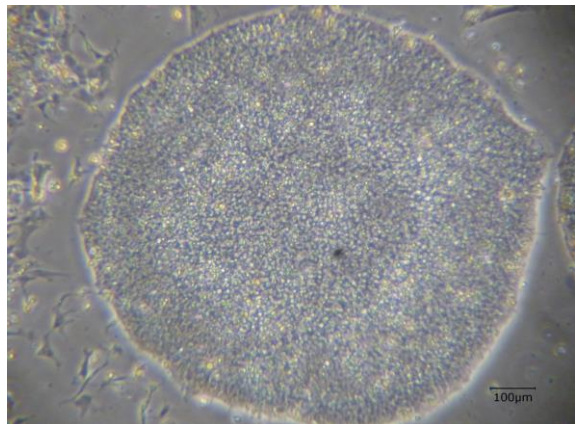
CiRA-j-1203-D: passage-3



CiRA-j-1203-E: passage-3



CiRA-j-1203-F: passage-3



(All images were captured at 4x magnification)